



Quick Installation Guide  

**TEW-653AP**  
1.01

# Table of Contents

English	1
1. Before You Start	1
2. Hardware Installation	2
3. Power-over-Ethernet Installation	3
4. Configure the Access Point	5
5. Mounting	8
Troubleshooting	9



## Package Contents

- TEW-653AP
- Multi-Language Quick Installation Guide
- CD-ROM (User's Guide)
- Cat. 5 Ethernet Cable (1m / 3.3ft.)
- Power Adapter (12V DC, 1A)
- Mounting Kit

## System Requirements

- Web Browser: Internet Explorer (6.0 or higher)
- A computer with a network adapter properly installed.
- A network Switch or Hub with an available network LAN port.
- Power over Ethernet (PoE) Switch (e.g. TPE-80WS) (Optional)
- Injector (e.g. TPE-111GI) (Optional)

### **Note:**

The TEW-653AP only works with Power over Ethernet (PoE) devices that follow the IEEE 802.3af standard.

## 2. Hardware Installation

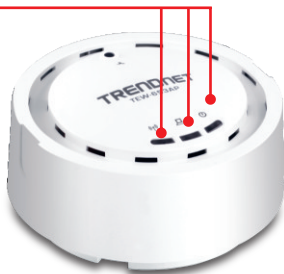
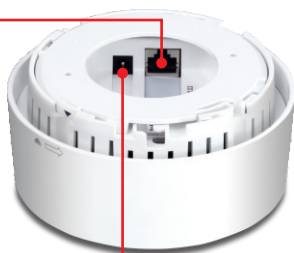
**Note:** Locate an optimum location for the Access Point. The best place for the Access Point is usually at the center of your wireless network. Please connect the computer configuring the TEW-653AP to the same switch/hub.

1. Run a RJ-45 cable and the power adapter through the cable clip on the TEW-653AP.

2. Connect the RJ-45 cable from the Switch/Hub to the **LAN** port on the Access Point.

3. Connect the Power Adapter to the Access Point and then to a power outlet.

4. Verify that the wireless, LAN and power LEDs are on.



ENGLISH

FRANÇAIS

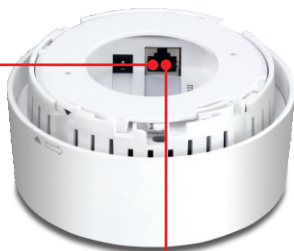
DEUTSCH

ESPAÑOL

РУССКИЙ

#### Using the TEW-653AP with a PoE switch

1. Connect a RJ-45 cable from the Power-Over-Ethernet Switch (e.g. TRENDnet TPE-80WS) to the LAN port on the Access Point.



2. Verify that the wireless, LAN and power LEDs are on. Please refer to step 4 in the Hardware Installation section.

## Using the TEW-653AP with the TPE-111GI

1. Connect the **Power Cord** to the **Power Adapter**.

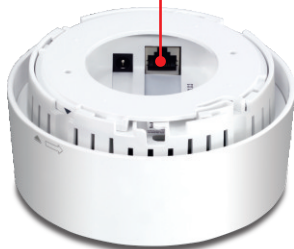


2. Connect the **Power Adapter** to the **DC 48V IN** connector on the TPE-111GI. Then connect the **Power Cord** to an outlet.



3. Connect a CAT-5 cable from a switch to the TPE-111GI's **DATA IN** port.

4. Connect a CAT-5 cable from the TEW-653AP's **LAN** port to the TPE-111GI's **PoE Out** port.

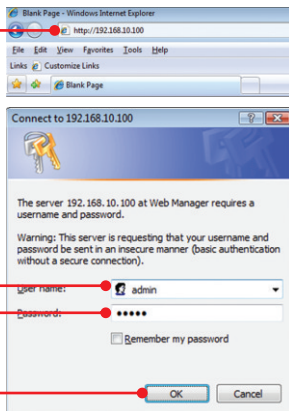


5. Verify that the wireless, LAN and power LEDs are on. Please refer to step 4 in the Hardware Installation section.

## 4. Configure the Access Point

**Note:** It is recommended that you configure the Access Point from a wired computer. Before the Access Point can be configured, a Static IP address must be assigned to your computer's network adapter in the subnet of 192.168.10.X. Since the Access Point's default IP address is 192.168.10.100, make sure no other network devices are assigned an IP address of 192.168.10.100. (Refer to Troubleshooting section on how to configure TCP/IP settings on your PC.)

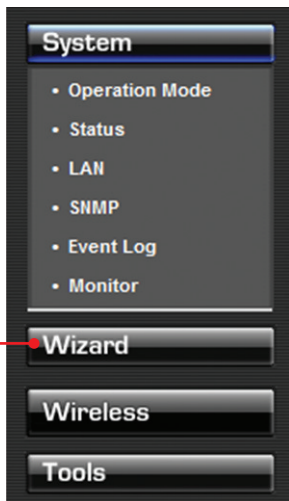
1. Open your web browser, type **http://192.168.10.100** in the Address bar, and then press **Enter**.



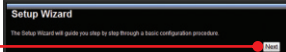
2. Enter the User name and Password, and then click **OK**. By default:

User Name: **admin**  
Password: **admin**

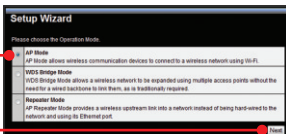
3. Click **Wizard**.



4. Click **Next**.



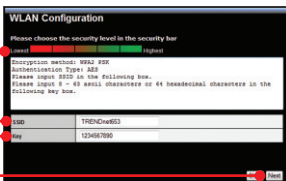
5. Select **AP Mode** and then click **Next**.



### Note:

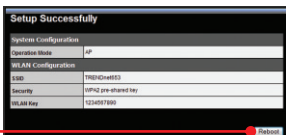
1. To protect your network from any unauthorized access it is recommended to enable wireless encryption.
2. The examples below are for WPA2-PSK security. If you select WPA-PSK or WPA2-PSK, make sure your wireless adapters support WPA or WPA2. If your wireless adapters do not support WPA or WPA2, then select WEP.

6. Use your mouse to select the desired security level (lowest for no encryption, highest for WPA2-PSK).



7. Enter the desired **SSID** and **Key**. Then click **Next**. By default, the SSID is TRENDnet653.

8. Setup is successful. Click **Reboot**.

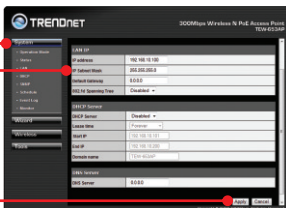




9. Wait 24 seconds while the Access Point reboots.

System is rebooting, please wait 24 seconds

10. Click **System** -> **LAN**. Configure the LAN settings to match your network settings and then click **Apply**.



11. Wait 14 seconds while the Access Point reboots.

System is rebooting, please wait 14 seconds

## Your configuration is complete

For detailed information regarding the **TEW-653AP's** configuration and advanced settings, please refer to the Troubleshooting section, User's Guide CD-ROM, or TRENDnet's website at <http://www.trendnet.com>.

## Register Your Product

To ensure the highest level of customer service and support, please take a moment to register your product Online at: [www.trendnet.com/register](http://www.trendnet.com/register)

Thank you for choosing TRENDnet

## 5. Mounting

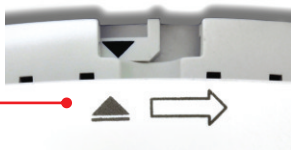
1. Use the mounting plate as a template and mark the wall for the correct screw position.

2. Drill holes for the screws at the marked positions on the wall.

3. Use the provided wood screws to secure the mounting plate to the wall.



4. Align the TEW-653AP with the mounting plate



5. Follow the arrow to secure the TEW-653AP to the mounting plate.



ENGLISH

Français

Deutsch

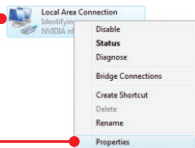
Español

Русский

## How do I configure TCP/IP settings on my computer?

### Windows Vista

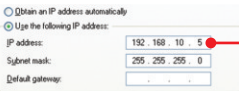
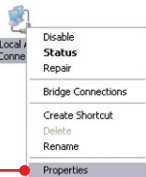
1. Go into the **Control Panel**, click **Network and Internet**, click **Network and Sharing Center**, click **Manage Network Connections** and then right-click the **Local Area Connection** icon and then click **Properties**.



2. Click **Internet Protocol Version 4(TCP/IPv4)** and then click **Properties**. Then click on **Use the following IP address**, and make sure you assign your network adapter an IP address in the subnet of 192.168.10.x.

### Windows XP/2000

1. Go into the **Control Panel**, double-click the **Network Connections** icon and then right-click the **Local Area Connection** icon and then click **Properties**.



2. Click **Internet Protocol (TCP/IP)** and then click **Properties**. Then click on **Use the following IP address**, and make sure you assign your network adapter an IP address in the subnet of 192.168.10.x.

I typed `http://192.168.10.100` in my Internet Browser's Address Bar, but an error message says "The page cannot be displayed." How can I get into the TEW-653AP's web configuration page?

1. Check your hardware settings again by following the instructions in section 2
2. Make sure the wireless, LAN and power LEDs are lit.
3. Make sure the TCP/IP settings are configured properly (see first question).
4. Since the Access Point's default IP address is 192.168.10.100, make sure that no other network devices are assigned an IP address of 192.168.10.100.
5. Reset the TEW-653AP. Take a pin or paper clip and press the reset button for 15 seconds. The reset button is located on top of the TEW-653AP.

**If my network's IP is different than the Access Point's range, what should I do?**

You should still configure the Access Point first. After all the settings are applied, go to the Access Point's configuration page, click on **System**, click on **LAN** and change the IP address of the Access Point to match your network's IP.

**After I successfully configured the Access Point to match my network settings, I can not connect to my network using wireless computers.**

If you have a DHCP server in your network, you need to go into TCP/IP settings again and re-select "Obtain an IP address automatically" to allow the PC to regain an IP address from your DHCP server.

**All the settings are correct, but I can not make a wireless connection to the Access Point.**

1. Double check that the wireless LED on the Access Point is lit.
2. Power cycle the Access Point. Unplug the power to the Access Point. Wait 15 seconds, then plug the power back in.
3. Contact the manufacturer of your wireless network adapter. Make sure the wireless network adapter is configured with the proper SSID. The default SSID of the Access Point is **TRENDnet653**.

**The TEW-653AP does not power on when I plug the device into a Power-Over-Ethernet switch or splitter. What should I do?**

1. Verify that the TEW-653AP powers up using the provided 12V, 1A power adapter.
2. Power cycle the PoE switch.
3. Unplug power to the switch, wait 15 seconds, then plug the power back in.
4. Plug the device into a different port on the PoE switch.
5. Try using another Cat-5e cable.

If you still encounter problems or have any questions regarding the **TEW-653AP**, please contact TRENDnet's Technical Support Department.

The following are some general wireless tips to help minimize the impact of interference within an environment.

### **Assign your network a unique SSID**

Do not use anything that would be identifying like “Smith Family Network”. Choose something that you would easily identify when searching for available wireless networks.

### **Do not turn off the SSID broadcast**

The SSID broadcast is intended to be on and turning it off can cause connectivity issues. The preferred method of securing a wireless network is to choose a strong form of encryption with a strong and varied encryption key.

**Note: after setting up the SSID, encryption type and encryption key/passphrase, please make a note of them for future reference. You will need this information to connect your wireless computers to the wireless router/access point.**

### **Change the channel**

Most wireless access points and routers are defaulted to channel 6. If you have a site survey tool that will display the channels you can plan your channel selection around neighboring access points to minimize interference from them. If your site survey tool does not display the channel try using channels 1 or 11.

### **Change the channel bandwidth**

If you are using an 802.11n router or access point you can also make the following changes. Change the channel bandwidth to 20/40MHz. This will provide the highest possible performance using an 802.11n device. Also, if using 802.11n you should be securing the network with WPA2 security.

**Note: Due to Wi-Fi certification considerations if you choose WEP, WPA or WPA2-TKIP encryption this device may operate in legacy wireless mode (802.11b/g). You may not get 802.11n performance as these forms of encryption are not supported by the 802.11n specification.**

### **Avoid stacking hardware on top of each other to prevent overheating issues**

Maintain enough free space around the hardware for good ventilation and airflow. There should also be plenty of free space around the antennas to allow the wireless signal to propagate. Please also make sure that the wireless hardware is not placed in any type of shelving or enclosures.

### **There are a number of other environmental factors that can impact the range of wireless devices.**

1. Adjust your wireless devices so that the signal is traveling in a straight path, rather than at an angle. The more material the signal has to pass through the more signal you will lose.

2. Keep the number of obstructions to a minimum. Each obstruction can reduce the range of a wireless device. Position the wireless devices in a manner that will minimize the amount of obstructions between them.
3. Building materials can have a large impact on your wireless signal. In an indoor environment, try to position the wireless devices so that the signal passes through less dense material such as dry wall. Dense materials like metal, solid wood, glass or even furniture may block or degrade the signal.
4. Antenna orientation can also have a large impact on your wireless signal. Use the wireless adapter's site survey tool to determine the best antenna orientation for your wireless devices.
5. Interference from devices that produce RF (radio frequency) noise can also impact your signal. Position your wireless devices away from anything that generates RF noise, such as microwaves, HAM radios, Walkie-Talkies and baby monitors.
6. Any device operating on the 2.4GHz frequency will cause interference. Devices such as 2.4GHz cordless phones or other wireless remotes operating on the 2.4GHz frequency can potentially drop the wireless signal. Although the phone may not be in use, the base can still transmit wireless signals. Move the phone's base station as far away as possible from your wireless devices.

If you are still experiencing low or no signal consider repositioning the wireless devices or installing additional access points. The use of higher gain antennas may also provide the necessary coverage depending on the environment.

# Declaration of Conformity



## Company Information:

Company Name:  
TRENDware International, Inc.

Company Address:  
20675 Manhattan Place  
Torrance, CA 90501  
USA

## Product Information:

Product Description:  
300Mbps Wireless N PoE Access Point



Model Number:  
TEW-653AP

Brand name:  
TRENDnet

## Technical Standards:

EN 300 328 V1.7.1: 10-2006  
EN 301 489-1 V1.8.1: 04-2008  
EN 301 489-17 V1.3.2: 04-2008  
EN 50385: 2002  
EN 60950-1: 2006

## Declaration:

*The product is herewith confirmed to comply with the requirements of Directive 1999/5/EC of the Council (European Parliament) on the radio and telecommunications terminal equipment.*

*I hereby declare that the products and devices mentioned above are consistent with the standards and provisions of the guidelines.*

Sonny Su

\_\_\_\_\_  
Name (Full Name)

October 9, 2009

\_\_\_\_\_  
Date

Director of Technology

\_\_\_\_\_  
Position / Title

  
\_\_\_\_\_  
Legal Signature

## GPL/LGPL General Information

This TRENDnet product includes free software written by third party developers. These codes are subject to the GNU General Public License ("GPL") or GNU Lesser General Public License ("LGPL"). These codes are distributed WITHOUT WARRANTY and are subject to the copyrights of the developers. TRENDnet does not provide technical support for these codes. The details of the GNU GPL and LGPL are included in the product CD-ROM. Please also go to (<http://www.gnu.org/licenses/gpl.txt>) or (<http://www.gnu.org/licenses/lgpl.txt>) for specific terms of each license.

The source codes are available for download from TRENDnet's web site ([http://trendnet.com/downloads/list\\_gpl.asp](http://trendnet.com/downloads/list_gpl.asp)) for at least three years from the product shipping date. You could also request the source codes by contacting TRENDnet. 20675 Manhattan Place, Torrance, CA 90501, USA. Tel: +1-310-961-5500 Fax: +1-310-961-5511.

## Informations générales GPL/LGPL

Ce produit TRENDnet comprend un logiciel libre écrit par des programmeurs tiers. Ces codes sont sujet à la GNU General Public License ("GPL" Licence publique générale GNU) ou à la GNU Lesser General Public License ("LGPL" Licence publique générale limitée GNU). Ces codes sont distribués SANS GARANTIE et sont sujets aux droits d'auteurs des programmeurs. TRENDnet ne fournit pas d'assistance technique pour ces codes. Les détails concernant les GPL et LGPL GNU sont repris sur le CD-ROM du produit. Veuillez également vous rendre en (<http://www.gnu.org/licenses/gpl.txt>) ou en (<http://www.gnu.org/licenses/lgpl.txt>) pour les conditions spécifiques de chaque licence. Les codes source sont disponibles au téléchargement sur le site Internet de TRENDnet web site ([http://trendnet.com/downloads/list\\_gpl.asp](http://trendnet.com/downloads/list_gpl.asp)) durant au moins 3 ans à partir de la date d'expédition du produit. Vous pouvez également demander les codes source en contactant TRENDnet. 20675 Manhattan Place, Torrance, CA 90501, USA. Tel: +1-310-961-5500 Fax: +1-310-961-5511

## Allgemeine Informationen zu GPL/LGPL

Dieses Produkt enthält die freie Software "netfilter/iptables" (© 2000-2004 netfilter project <http://www.netfilter.org>) und die freie Software „Linux\_mtd“ (Memory Technology Devices) Implementation (© 2000 David Woodhouse), erstmals integriert in Linux Version 2.4.0-test 3 v. 10.07.2000 (<http://www.kernel.org/pub/linux/kernel/v2.4/old-test-kernels/linux-2.4.0-test3.tar.bz2>), sowie weitere freie Software. Sie haben durch den Erwerb dieses Produktes keinerlei Gewährleistungsansprüche gegen die Berechtigten an der oben genannten Software erworben; weil diese die Software kostenfrei lizenzieren gewähren sie keine Haftung gemäß unten abgedruckten Lizenzbedingungen. Die Software darf von jedermann im Quell- und Objektcode unter Beachtung der Lizenzbedingungen der GNU General Public License Version 2, und GNU Lesser General Public License (LGPL) vervielfältigt, verbreitet und verarbeitet werden. Die Lizenz ist unten im englischsprachigen Originalwortlaut wiedergegeben. Eine nichtoffizielle Übersetzung in die deutsche Sprache finden Sie im Internet unter (<http://www.gnu.de/documents/gpl-2.0.de.html>). Eine allgemeine öffentliche GNU Lizenz befindet sich auch auf der mitgelieferten CD-ROM. Sie können Quell- und Objektcode der Software für mindestens drei Jahre auf unserer Homepage [www.trendnet.com](http://trendnet.com) im Downloadbereich ([http://trendnet.com/langen/downloads/list\\_gpl.asp](http://trendnet.com/langen/downloads/list_gpl.asp)) downloadend. Sofern Sie nicht über die Möglichkeit des Downloads verfügen können Sie bei TRENDnet. 20675 Manhattan Place, Torrance, CA 90501 -U.S.A.-, Tel.: +1-310-961-5500, Fax: +1-310-961-5511 die Software anfordern.

## Información general sobre la GPL/LGPL

Este producto de TRENDnet incluye un programa gratuito desarrollado por terceros. Estos códigos están sujetos a la Licencia pública general de GNU ("GPL") o la Licencia pública general limitada de GNU ("LGPL"). Estos códigos son distribuidos SIN GARANTÍA y están sujetos a las leyes de propiedad intelectual de sus desarrolladores. TRENDnet no ofrece servicio técnico para estos códigos. Los detalles sobre las licencias GPL y LGPL de GNU se incluyen en el CD-ROM del producto. Consulte también el (<http://www.gnu.org/licenses/gpl.txt>) ó el (<http://www.gnu.org/licenses/lgpl.txt>) para ver las cláusulas específicas de cada licencia. Los códigos fuentes están disponibles para ser descargados del sitio Web de TRENDnet ([http://trendnet.com/downloads/list\\_gpl.asp](http://trendnet.com/downloads/list_gpl.asp)) durante por lo menos tres años a partir de la fecha de envío del producto. También puede solicitar el código fuente llamando a TRENDnet. 20675 Manhattan Place, Torrance, CA 90501, USA. Tel: +1-310-961-5500 Fax: +1-310-961-5511

## Общая информация о лицензиях GPL/LGPL

В состав данного продукта TRENDnet входит бесплатное программное обеспечение, написанное сторонними разработчиками. Это ПО распространяется на условиях лицензий GNU General Public License ("GPL") или GNU Lesser General Public License ("LGPL"). Программы распространяются БЕЗ ГАРАНТИИ и охраняются авторскими правами разработчиков. TRENDnet не оказывает техническую поддержку этого программного обеспечения. Подробное описание лицензий GNU GPL и LGPL можно найти на компакт-диске, прилагаемом к продукту. В пунктах (<http://www.gnu.org/licenses/gpl.txt>) и (<http://www.gnu.org/licenses/lgpl.txt>) изложены конкретные условия каждой из лицензий. Исходный код программ доступен для загрузки с веб-сайта TRENDnet ([http://trendnet.com/downloads/list\\_gpl.asp](http://trendnet.com/downloads/list_gpl.asp)) в течение, как минимум, трех лет со дня поставки продукта. Кроме того, исходный код можно запросить по адресу TRENDnet. 20675 Manhattan Place, Torrance, CA 90501, USA. Tel: +1-310-961-5500 Fax: +1-310-961-5511



## GPL/LGPL informações Gerais

Este produto TRENDnet inclui software gratuito desenvolvido por terceiros. Estes códigos estão sujeitos ao GPL (GNU General Public License) ou ao LGPL (GNU Lesser General Public License). Estes códigos são distribuídos SEM GARANTIA e estão sujeitos aos direitos autorais dos desenvolvedores. TRENDnet não presta suporte técnico a estes códigos. Os detalhes do GNU GPL e do LGPL estão no CD-ROM do produto. Favor acessar <http://www.gnu.org/licenses/gpl.txt> ou <http://www.gnu.org/licenses/lgpl.txt> para os termos específicos de cada licença. Os códigos fonte estão disponíveis para download no site da TRENDnet ([http://trendnet.com/langen/downloads/list\\_gpl.asp](http://trendnet.com/langen/downloads/list_gpl.asp)) por pelo menos três anos da data de embarque do produto. Você também pode solicitar os códigos fonte contactando TRENDnet, 20675 Manhattan Place, Torrance, CA 90501, USA. Tel: +1-310-961-5500, Fax: +1-310-961-5511.

## GPL/LGPL üldinformatsioon

See TRENDneti toode sisaldab vaba tarkvara, mis on kirjutatud kolmanda osapoole poolt. Koodid on allutatud GNU (General Public License) Üldine Avaliku Litsentsi (GPL) või GNU (Lesser General Public License) ("LGPL") Vähem Üldine Avalik Litsentsiga. Koode vahendatakse ILMA GARANTIITA ja need on allutatud arendajate poolt. TRENDnet ei anna koodidele tehnilist tuge. Detailsemat infot GNU GPL ja LGPL kohta leiate toote CD-ROMil. Infot mõlema litsentsi spetsiifiliste terminite kohta leiate (<http://www.gnu.org/licenses/gpl.txt>) või (<http://www.gnu.org/licenses/lgpl.txt>). Infot mõlema litsentsi spetsiifiliste terminite kohta leiate (<http://www.gnu.org/licenses/gpl.txt>) või (<http://www.gnu.org/licenses/lgpl.txt>). Lähtekoodi on võimalik alla laadida TRENDneti kodulehelt ([http://trendnet.com/langen/downloads/list\\_gpl.asp](http://trendnet.com/langen/downloads/list_gpl.asp)) kolme aasta jooksul alates toote kättesaamise kuupäevast. Samuti võite lähtekoodi paluda TRENDneti'lt, 20675 Manhattan Place, Torrance, CA 90501, USA. Tel: +1-310-961-5500, Fax: +1-310-961-5511.

## Certifications

This equipment has been tested and found to comply with FCC and CE Rules.

Operation is subject to the following two conditions:

- (1) This device may not cause harmful interference.
- (2) This device must accept any interference received. Including interference that may cause undesired operation.



Waste electrical and electronic products must not be disposed of with household waste. Please recycle where facilities exist. Check with you Local Authority or Retailer for recycling advice.



**NOTE:** THE MANUFACTURER IS NOT RESPONSIBLE FOR ANY RADIO OR TV INTERFERENCE CAUSED BY UNAUTHORIZED MODIFICATIONS TO THIS EQUIPMENT. SUCH MODIFICATIONS COULD VOID THE USER'S AUTHORITY TO OPERATE THE EQUIPMENT.

## ADVERTENCIA

En todos nuestros equipos se mencionan claramente las características del adaptador de alimentación necesario para su funcionamiento. El uso de un adaptador distinto al mencionado puede producir daños físicos y/o daños al equipo conectado. El adaptador de alimentación debe operar con voltaje y frecuencia de la energía eléctrica domiciliar existente en el país o zona de instalación.



## Product Warranty Registration

Please take a moment to register your product online.  
Go to TRENDnet's website at <http://www.trendnet.com/register>